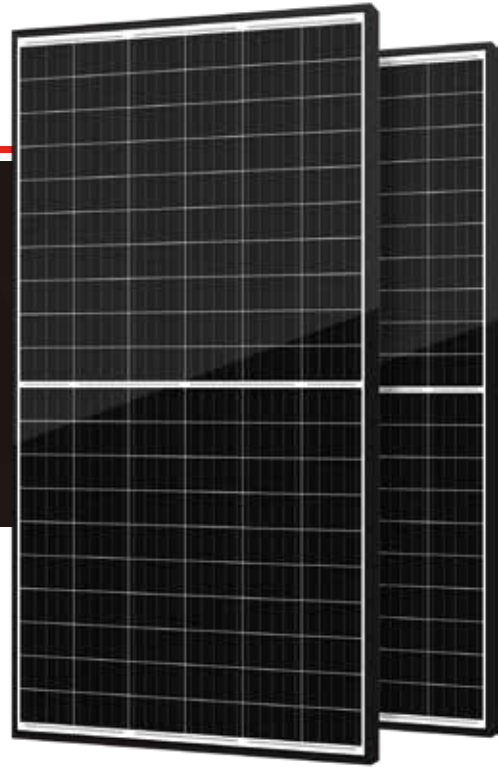







GSUN-BMB(-HV) SERIES 6 INCH 120 CELLS

**325-340w**



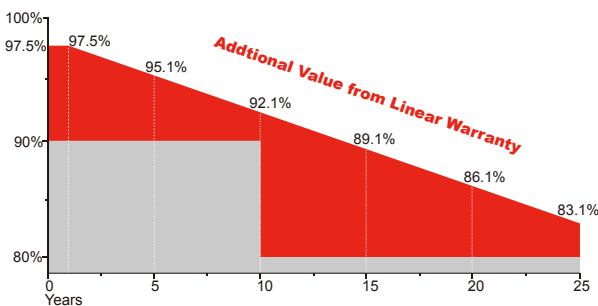
### More Benefits

-  Higher Durability and Reliability
-  Lower internal current, lower mismatch loss
-  Lower power degradation, more power yield, more returns
-  Safety for fire risk(Class C tested in TÜV SÜD)
-  Unique circuit design, better shading tolerance

### Certifications



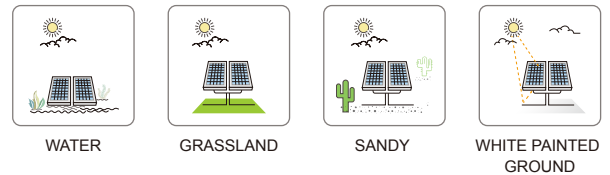
### Warranty



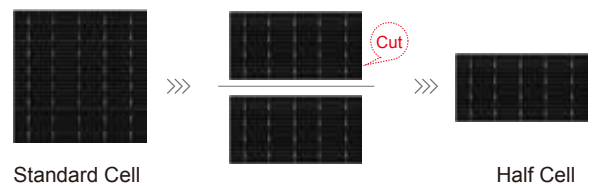
**10 YEARS** Guarantee on product material and workmanship

**25 YEARS** linear power output warranty

### Perfect for Highly—reflective Project Sites



### Less Internal Power Loss



The ribbon length of half-cell is shorter than normal cell. Calculated by Joule's law and Ohm' law, the power loss reduction is nearly 6%.

# GSUN-(325-340W)-BMB

## Electrical Characteristics

Module Type	GSUN-325-BMB GSUN-325-BMB-HV	GSUN-330-BMB GSUN-330-BMB-HV	GSUN-335-BMB GSUN-335-BMB-HV	GSUN-340-BMB GSUN-340-BMB-HV
	STC	STC	STC	STC
Maximum Power at STC (Pmp)	325	330	335	340
Open Circuit Voltage (Voc)	40.4	40.6	40.8	41.0
Short Circuit Current (Isc)	9.93	10.02	10.11	10.20
Maximum Power Voltage (Vmp)	34.0	34.2	34.4	34.6
Maximum Power Current (Imp)	9.42	9.51	9.60	9.69
Module Efficiency at STC( $\eta_m$ )	18.90	19.19	19.49	19.78
Power Tolerance	(0,+4.99)			
Maximum System Voltage	1000 VDC / 1500 VDC			
Maximum Series Fuse Rating	20A			

STC: Irradiance 1000 W/m<sup>2</sup> module temperature 25°C AM=1.5;

## Temperature Characteristics

Pmax Temperature Coefficient	-0.36 %/°C
Voc Temperature Coefficient	-0.28 %/°C
Isc Temperature Coefficient	+0.05 %/°C
Operating Temperature	-40 ~ +85 °C
Nominal Operating Cell Temperature (NOCT)	45±2 °C
Fire Rating	Class C

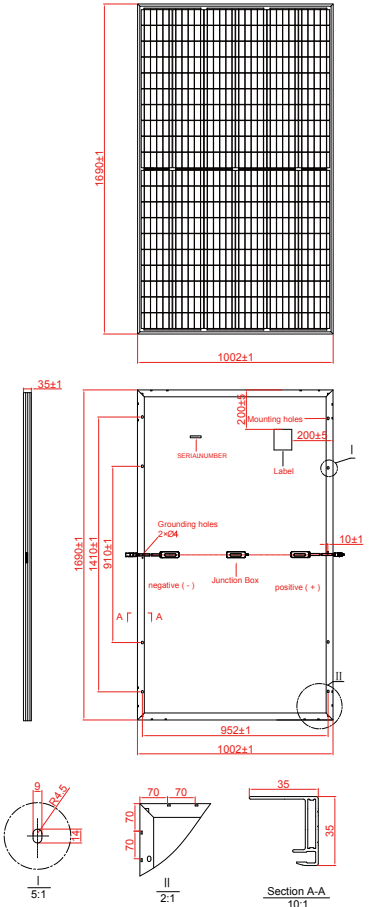
## Mechanical Specifications

External Dimensions	1690 x 1002 x 35 mm
Weight	19.0kg
Solar Cells	PERC Mono crystalline 158.75 × 79.375 mm (120pcs)
Front Glass	3.2 mm AR coating tempered glass, low iron
Frame	Anodized aluminium alloy
Junction Box	IP68, 3 diodes
Output Cable	4.0 mm <sup>2</sup> , Portrait: 255mm(+)/355mm(-); Landscape: 1200mm
Connector	TT02; PV-KST4/xy-UR; PV-KBT4/xy-UR;
Mechanical Load	5400 Pa

## Packing Configuration

	1690 x 1002 x 35 mm		
Container	20'GP	40'GP	40'HQ
Pieces per Pallet	30	30	30+2*
Pallets per Container	12	26	26
Pieces per Container	360	780	832

\* 30+2 pieces per pallet is the special package which only suits for container transport.



## I-V Curve

